

PASSABLE WALKABLE COVERING

CONCRETE AND MASONRY SUPPORT: with no thermal insulation – traditional reinforced concrete flooring

Para. 1

Masonry and cement support and sloping screed of sand and cement mortar drawn to a straight edge and, if necessary, smoothed using a trowel. Before laying the membrane, treat the entire surface of the screed that is to be made waterproof, as well as the overlaps, with **PRIMER V 70**, applying this at a rate of $200 \div 300 \text{ g/m}^2$, and in any case using a sufficient quantity to ensure adherence of the waterproof membrane.

Para. 2

5 mm thick basic waterproof membrane **ITER ROUTE**, (elastoplastomer polymer bituminous membrane BPP reinforced with spunbound polyester non-woven fabric weighing no less than 250 g/m^2) torched on, completely adhering and carefully welded to the overlaps (minimum overlapping: 80 mm side and 150 mm butt - minimum actual adhesion: 60 mm side and 100 mm butt - for butt joints, a maximum overlapping of three canvases will be allowed) and at the point of all the perimeter details.

Para. 3

Supply and installation, for heat or hot air canvas in correspondence with the vertical laps, of a 25 cm high strip of 4 mm BPP membrane.

Para. 4

5 mm thick **ITER ROUTE**, finishing waterproof membrane, (BPP elastoplastomer polymer bituminous membrane reinforced with high resistance spunbound polyester non-woven fabric) weighing no less than 250 g/m^2) torched on, in sufficient quantity and in the same direction as the basic membrane but with staggered longitudinal joints (that is, laying the canvases of the 2nd layer straddling the 1st one), completely adhering and carefully welded on the overlaps (minimum overlapping: 80 mm side and 150 mm butt - actual minimum adhesion: 60 mm side and 100 mm butt - for butt joints, a maximum overlapping of three canvases will be allowed) and in correspondence with all the perimeter details.

Para. 5

Doubling corner element with membrane, with specifications as described above, to waterproof the vertical one that will overlap the horizontal one by at least 10 cm, and welded for thermal-tempering with specific safety or hot air burner.

The height of the vertical one will be equal or greater than 15 cm from the height of the finished flooring.

Para. 6

Protection element with perimeter lap with a compressible XPS element that is 2 cm thick. Fixed with suitable glue.

Para. 7

Filtering separation layer comprises rot-proof polyester synthetic non-woven fabric, staple punched with a weight of approximately 300 g/m^2 and applied dry with the overlaps overlying simply for 15 cm.

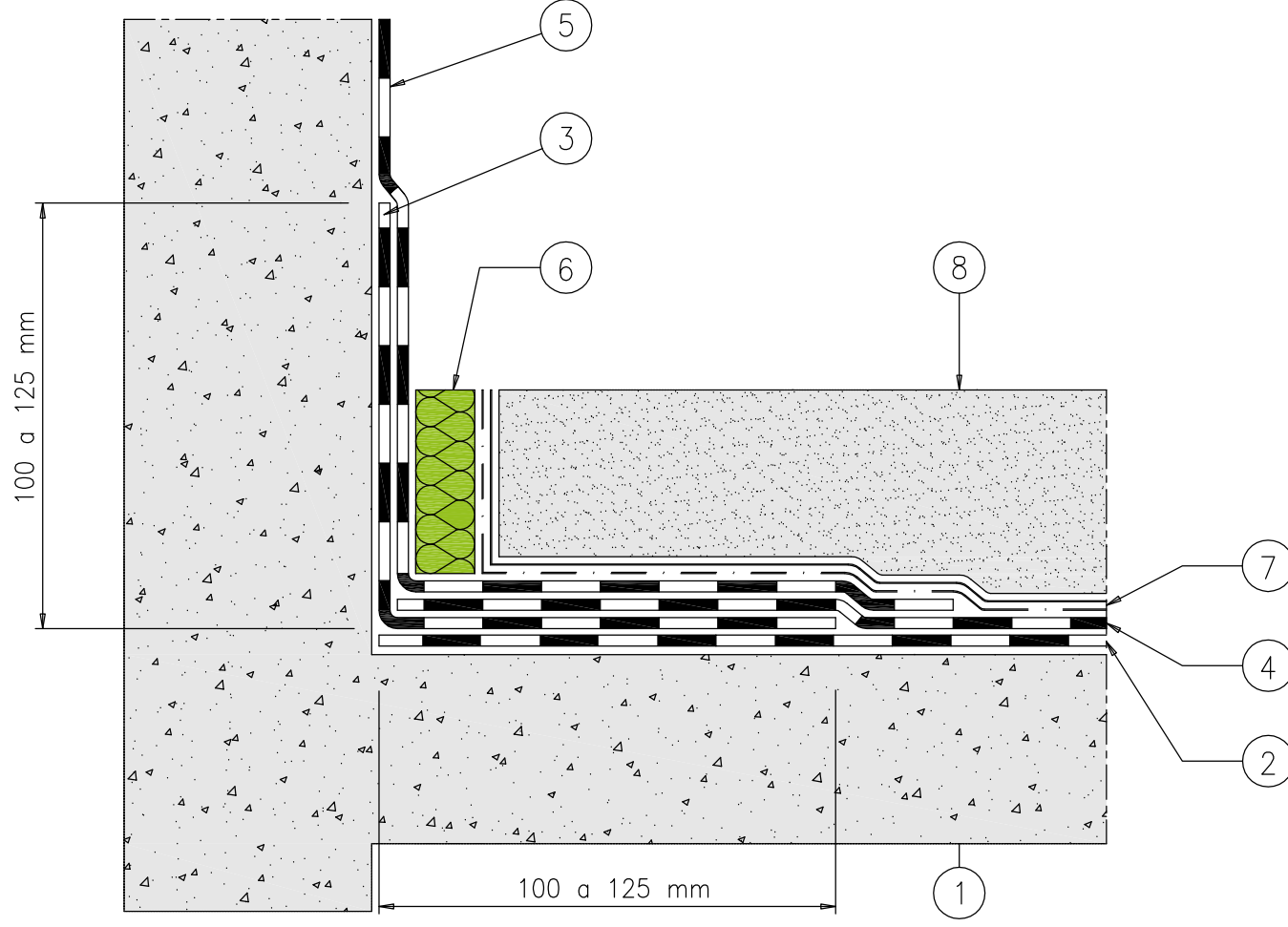
Separation layer in LDPE polyethylene film, that is 20/100 mm thick, dry applied with overlying laps of 15 cm. The layer will lap for a height greater than the thickness of the finished flooring

Para. 8

Supply and installation of a protective layer comprising industrial flooring in

PASSABLE WALKABLE COVERING

CONCRETE AND MASONRY SUPPORT: with no thermal insulation – traditional reinforced concrete flooring



1. Support treated with Primer V70
2. 5 mm Iter Route base membrane
3. Corner strengthening strip created with 5 mm Iter Route
4. 5 mm Iter Route finishing membrane
5. Doubling corner created with Iter Route 5 mm finishing membrane
6. Compressible element of perimeter protection
7. Protection and separation element
8. Cement flooring