

VERTICAL BASEMENT MASONRY

Para. 1

Regulated and smoothed reinforced concrete masonry.

Before laying the membrane, treat the entire surface of the screed that comprises waterproof, as well as the overlaps, with **PRIMER V 70**, applying this at a rate of 200 ÷ 300 g/m², and in any case using a sufficient quantity to ensure adherence of the waterproof membrane.

Para. 2

Any 3 mm thick NB polymer modified bitumen underlayer membrane, (reinforced with spunbound polyester non-woven fabric), torched on in complete adherence and carefully welded to the overlap (minimum overlapping: 80 mm side and 150 mm butt - actual minimum adhesion: 60 mm side and 100 mm butt - for butt joints, a maximum overlapping of three canvases will be allowed) and at the point of all the perimeter details.

The height of the strip above ground will be at least 15 cm greater than the substrate of culture.

Para. 3

4 mm thick **ITER ANTIRADICE**, finishing waterproof membrane, (BPP elastoplastomer polymer bituminous membrane reinforced with spunbound polyester non-woven fabric) torched on, in sufficient quantity and in the same direction as the basic membrane but with staggered longitudinal joints (that is, laying the canvases of the 2nd layer straddling the 1st one), completely adhering and carefully welded on the overlaps (minimum overlapping: 80 mm side and 150 mm butt - minimum actual adhesion: 60 mm side and 100 mm butt - for butt joints, a maximum overlapping of three canvases will be allowed) and at the point of all the perimeter details.

The height of the strip above ground will be at least 20 cm greater than the growth substratum and at least 5 cm greater than that of the basic membrane overlap one.

Para. 4

Protection layer of the waterproofing and filtering geocomposite drainage prefabricated in rolls, thickness in mm.

Para. 5

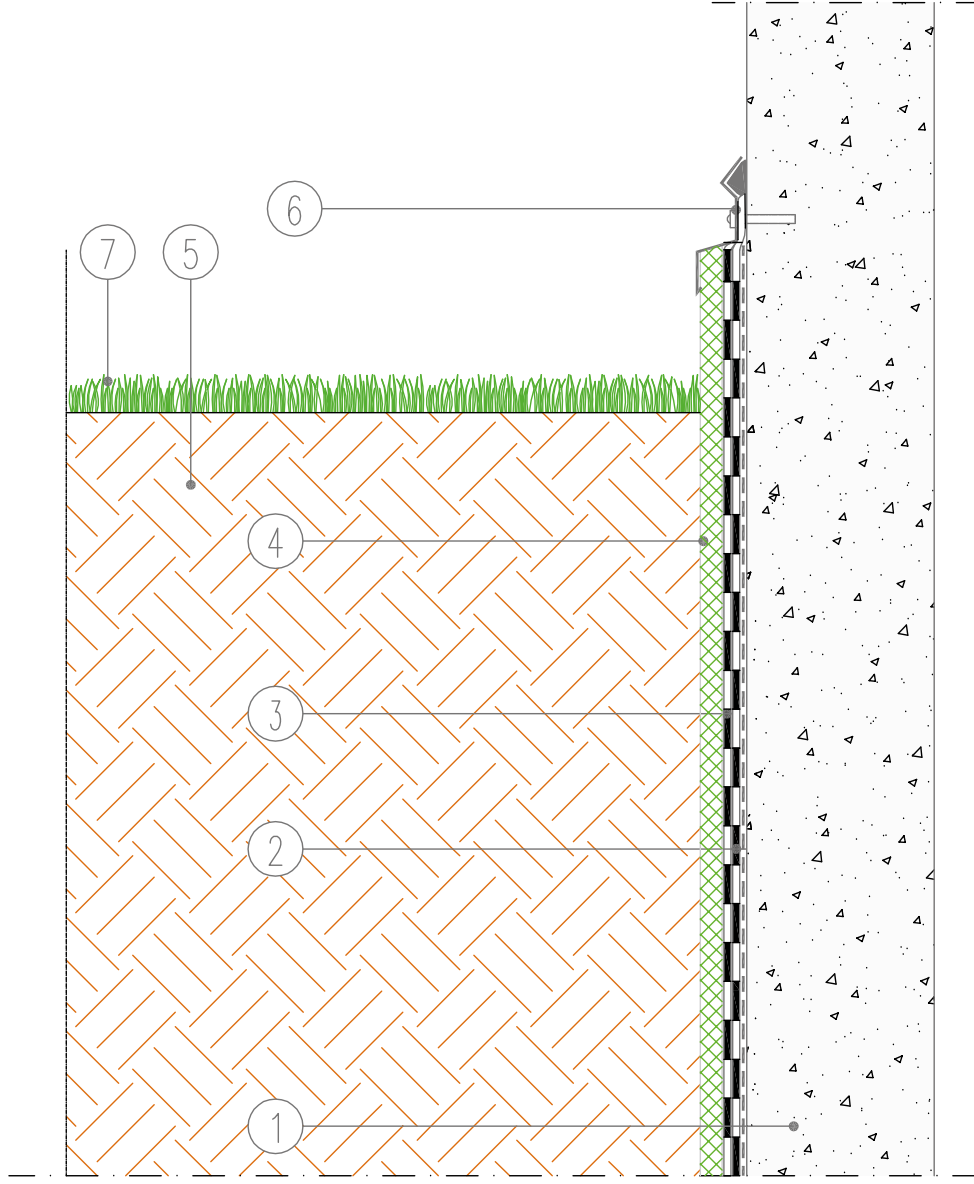
Backfill and substrate of culture.

Para. 6

Protection flashing of the membrane peak with a thickness mm, length cm, using 1 every cm; sealed at the top with an elastomeric product that can be painted.

Para. 7

Vegetation.

VERTICAL BASEMENT MASONRY

1. Reinforced concrete masonry treated with Primer V70
2. Any 3 mm NB polymer modified bitumen underlayer membrane
3. 4 mm Iter Antiradice
4. Protection layer and geocomposite drainage
5. Backfill and/or growth substratum.
6. Protection flashing of the membrane peak
7. Vegetation